

SHELBOURNE

— ESTATES —

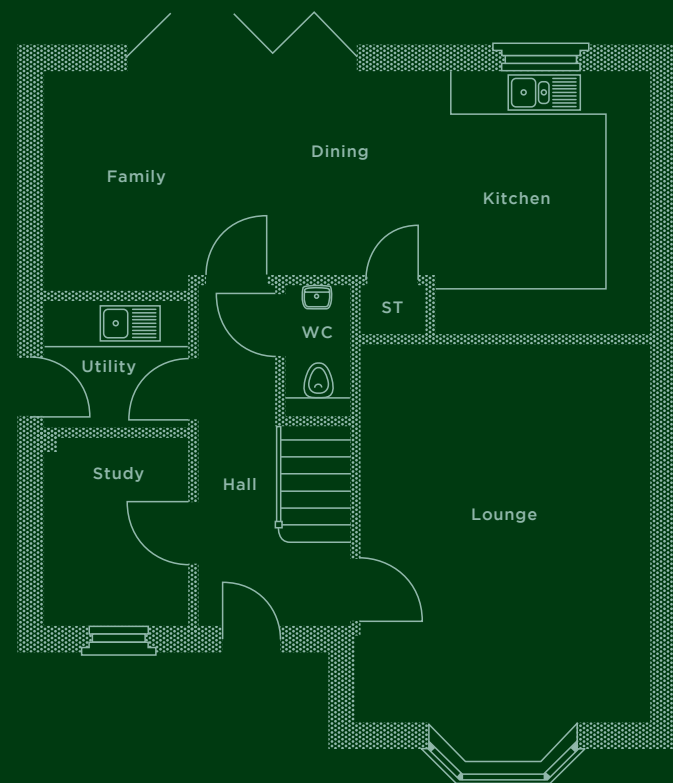


The Harbury

Displaying instant classic charm, The Harbury stands tall and proud as a fantastic family home. Complimenting its fine architecture is a modern and spacious interior that is carefully designed around today's lifestyle, with an open plan kitchen area and grand bi-fold doors leading to the garden and creating a light and spacious environment.

4 Bedrooms

1,462 TOTAL SQ FT



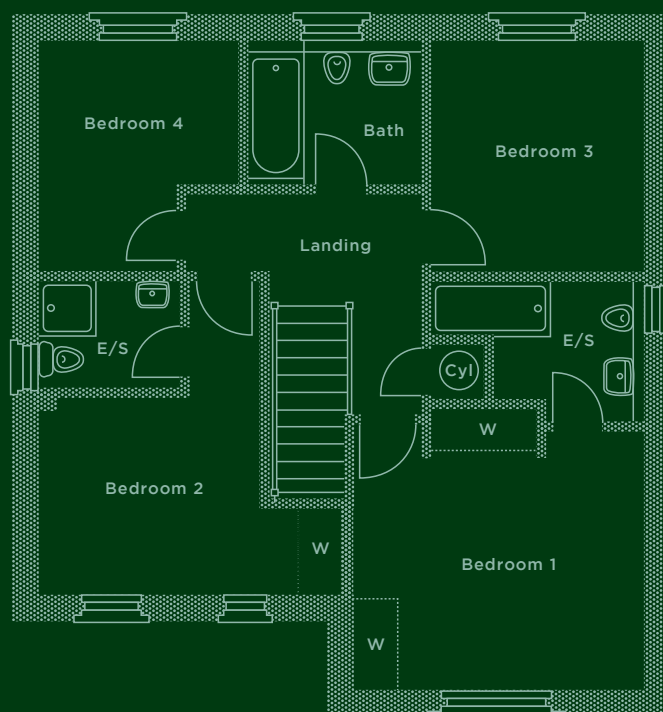
Downstairs

Lounge	4000* x 5600*mm 13'1"* x 18'4"*
Family/Dining/ Kitchen	8200* x 3550*mm 26'11"* x 11'8"*
Utility	1950 x 1700mm 6'5" x 5'7"
Study	1950 x 2550mm 6'5" x 8'4"
Cloaks/WC	890 x 1715mm 2'11" x 5'7"

Upstairs

Bedroom 1	4000* x 3850*mm 13'1"* x 12'8"*
Ensuite 1	2910* x 1955*mm 9'7"* x 6'2"*
Bedroom 2	4110* x 4275*mm 13'6"* x 14'0"*
Ensuite 2	1910 x 1475mm 6'3" x 4'10"
Bedroom 3	2910 x 3155mm 9'7" x 10'4"
Bedroom 4	2675* x 3140*mm 8'9"* x 10'4"*
Bathroom	2375 x 1965mm 7'9" x 6'5"

*Denotes maximum room dimensions.



This is a computer generated image of The Harbury, elevation treatment may vary. All internal images are indicative of a Shelbourne house type. Room sizes are approximate and floorplans are not to scale. Plots may be handed and any garages may be single or double. Kitchen and bathroom layouts are indicative. These plans are correct at time of going to press, but may be subject to change during construction. Please ensure that you check for specific plot details. Speak to our Sales Advisor for individual parking configurations.